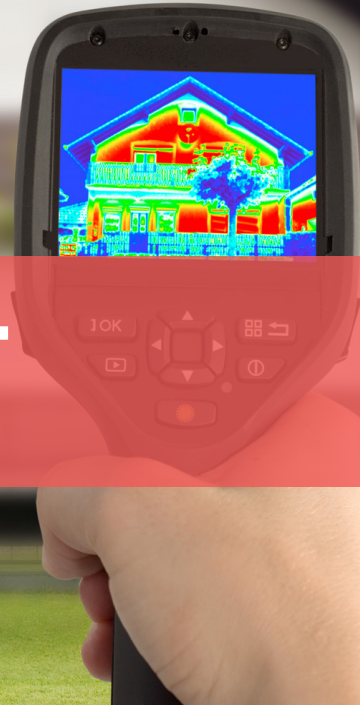


PICO 384+

384 x 288 – 17 μm



The thermal image sensor, Pico384+, is designed to help manufacturers penetrate mass thermal detection markets.

This full digital surface mount device is built on proven technology, limits development costs and shortening time to market, helping manufacturers get simple-to-use and truly competitive end products to the market.

A NEW EVEN MORE EFFICIENT 17 μm THERMAL IMAGE SENSOR IN QVGA FORMAT



INCREDIBLE IMAGE QUALITY



SEAMLESS INTEGRATION



OPTIMIZED TOTAL COST OF OWNERSHIP

LEISURE



SURVEILLANCE

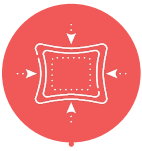
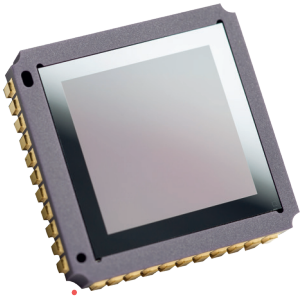


THERMOGRAPHY



●● A NEW EVEN MORE EFFICIENT 17 μ m THERMAL IMAGE SENSOR IN QVGA FORMAT ●●

PICO384+



COMPACT



LONG RANGE OBSERVATION



RELIABLE



FULL DIGITAL

INCREDIBLE IMAGE QUALITY

Sharp contrast	<ul style="list-style-type: none"> Thermal sensitivity < 40 mK, (f/1, 300K, 50Hz) [-40°C; +85°C] operating temperature range
Fluid and smooth image	<ul style="list-style-type: none"> Frame rate up to 60Hz
High uniformity	<ul style="list-style-type: none"> Array operability > 99.8 %

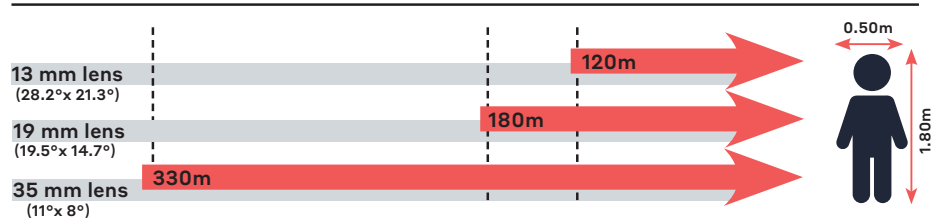
SEAMLESS INTEGRATION

Simplified electronic design	<ul style="list-style-type: none"> Full access to sensor features (I²C serial link) Free run or external trigger mode Full digital component
High volume compliant	<ul style="list-style-type: none"> Surface Mount Device (J-Lead44) JEDEC's reflow and handling standards compatible

OPTIMIZED TOTAL COST OF OWNERSHIP

Simplified image processing	<ul style="list-style-type: none"> Predictable behavior TECless, Shutterless compatible
Battery optimization	<ul style="list-style-type: none"> Low power consumption < 220 mW - 60Hz Digital mode
Proven reliability	<ul style="list-style-type: none"> Standards MIL810 - MIL883

Recognition distances for human measuring 1.80 m x 0.50 m



Range for Johnson's criteria, target delta T = 2K, perfect atmospheric and optics transmissions, theoretical square pixel.



LYNRED HEADQUARTERS
 Avenue de la Vauve - CS 20018
 91127 Palaiseau - France
 Phone +33 (0)1 60 92 18 30
 info@lynred.com

DEVELOPMENT AND PRODUCTION CENTER
 Actipole - CS 10021 - 364, route de Valence
 38113 Veurey-Voroize - France
 Phone +33 (0)4 76 28 77 00
 info@lynred.com